



GIA

GEM TRADE LABORATORY

New York Headquarters
580 Fifth Avenue | New York, NY 10036-4794
T: 212-221-5858 | F: 212-575-3095

Carlsbad
5355 Armada Drive | Carlsbad, CA 92008-4699
T: 760-603-4500 | F: 760-603-1814

DIAMOND GRADING REPORT

March 17, 2000

Shape and Cutting Style OVAL BRILLIANT

Measurements 7.98 x 5.43 x 3.59 mm

Weight 1.02 carat

Proportions

Depth 66.1 %

Table 57 %

Girdle MEDIUM TO THICK, FACETED

Culet SMALL

Finish

Polish VERY GOOD

Symmetry GOOD

Clarity Grade VS2

Color Grade E

Fluorescence NONE

Comments:

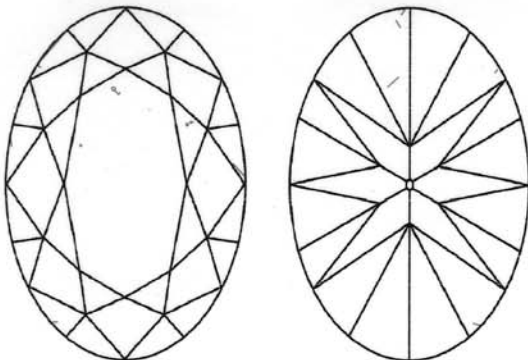
Pinpoints are not shown.



55245801

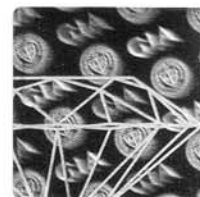
This Report is not a guarantee, valuation or appraisal. This Report contains only the characteristics of the diamond described herein after it has been graded, tested, examined and analyzed by GIA Gem Trade Laboratory under 10X magnification, and/or has been inscribed, using the techniques and equipment available to GIA Gem Trade Laboratory at the time of the examination and/or at the time of being inscribed, including fully corrected triplet loupe and binocular microscope, master color comparison diamonds, standardized viewing environment and light source, electronic carat balance, synthetic diamond screening device, high intensity short wave fluorescence imaging system, short wave ultraviolet transmission detection system, optical measuring device, micro laser inscribing device, ProportionScope®, ultraviolet lamps, millimeter gauge, and ancillary instruments as necessary. Red symbols denote internal characteristics (inclusions). Green or black symbols denote external characteristics (blemishes). Diagram is an approximate representation of the diamond, and symbols shown indicate type, position, and approximate size of clarity characteristics. All clarity characteristics may not be shown. Details of finish are not shown. The recipient of this Report may wish to consult a credentialed Jeweler or Gemologist about the importance and interrelationship of cut, color, clarity and carat weight.

| GIA CLARITY SCALE | | GIA COLOR SCALE |
|---------------------|----------------|-----------------|
| FLAWLESS | COLORLESS | D |
| INTERNALLY FLAWLESS | | E |
| VVS ₁ | | F |
| VVS ₂ | NEAR COLORLESS | G |
| VS ₁ | | H |
| | | VS ₂ |
| SI ₁ | FAINT | J |
| | | K |
| | | L |
| SI ₂ | VERY LIGHT | M |
| | | N |
| | | O |
| I ₁ | LIGHT | P |
| | | Q |
| | | R |
| I ₂ | | S |
| | | T |
| | | U |
| I ₃ | | V |
| | | W |
| | | X |
| | | Y |
| | | Z |



KEY TO SYMBOLS

- Crystal
- \ Needle
- ~ Feather



IMPORTANT DOCUMENT, STORE SAFELY

The security features in this document, including the hologram, security screen, microprint lines and chemical sensitivity, in addition to those not listed, exceed document security industry guidelines.

NOTICE: IMPORTANT LIMITATIONS ON BACK

COPYRIGHT ©2000 GIA GEM TRADE LABORATORY

GIA REPORT 10078422



GIA
GEM TRADE LABORATORY

GIA Gem Trade Laboratory is the hallmark of integrity, reliability and consistency in gemological services and research. Its reports are internationally recognized as the benchmark for gemological excellence. Since 1949, GIA has graded the vast majority of the world's fine diamonds, regardless of size.

When trade professionals turn to GIA Gem Trade Laboratory and its staff of well over 300, they place their trust in more than 50 years of GIA's standards of quality, expertise and serving customer needs.

GIA Gem Trade Laboratory's sole affiliation is with the Gemological Institute of America, the world's largest and most respected nonprofit educational organization for the international gem and jewelry industry.

GIA makes no compromise on excellence. All procedures are designed for optimum consistency and accuracy. Record keeping and routing techniques are meticulous to ensure each item is accorded superior security and care in handling. Most important in the equation for excellence is the training and experience of the laboratory's graders.

Headquartered in the heart of New York's famed diamond and jewelry district, with a second state-of-the-art laboratory in Carlsbad, California, and an affiliate in Tokyo, Japan, GIA Gem Trade Laboratory has established itself as the world's foremost gemological laboratory, serving the gem and jewelry industry worldwide.

IMPORTANT DOCUMENT, STORE SAFELY

**GIA GEM TRADE LABORATORY HEADQUARTERS
AND EAST COAST LABORATORY**

580 Fifth Avenue, Suite 200
New York, New York 10036-4794
T: 212-221-5858
F: 212-575-3095

WEST COAST LABORATORY

5355 Armada Drive, Suite 200
Carlsbad, California 92008-4699
T: 760-603-4500
F: 760-603-1814

Forwarding services available in:

| | |
|----------|--------------|
| New York | Los Angeles |
| Chicago | Johannesburg |
| Antwerp | Hong Kong |
| London | Tel Aviv |

For information about GIA Gem Trade Laboratory Services, visit our web site at www.gia.edu, or call Client Services in New York at 212-221-5858 or in California at 760-603-4500.



GIA
GEM TRADE LABORATORY

The Hallmark of Integrity Since 1949
A Division of the Nonprofit Gemological Institute of America

Copyright ©2000 GIA Gem Trade Laboratory



GIA
GEM TRADE LABORATORY

The Hallmark of Integrity Since 1949
A Division of the Nonprofit Gemological Institute of America